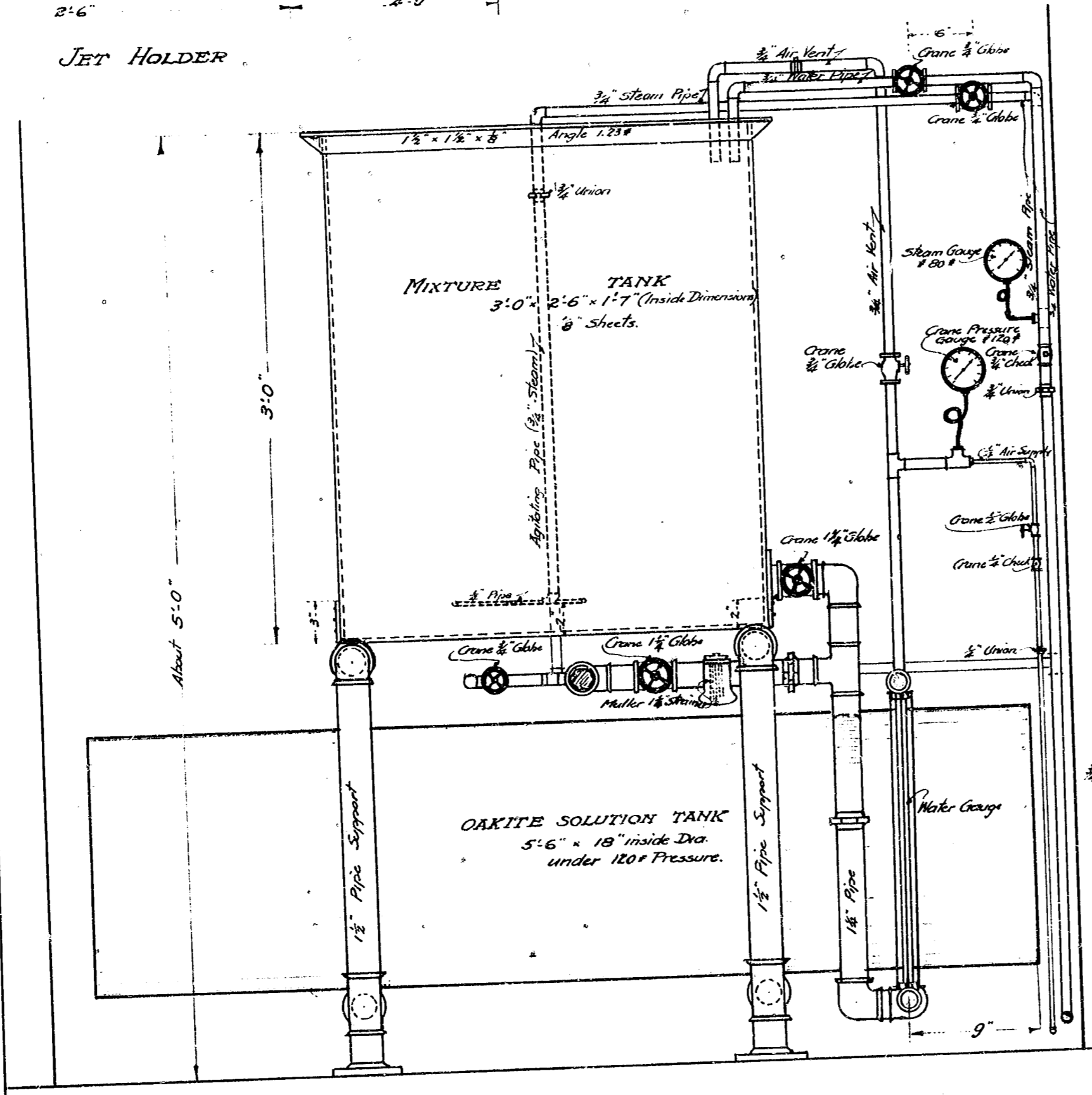


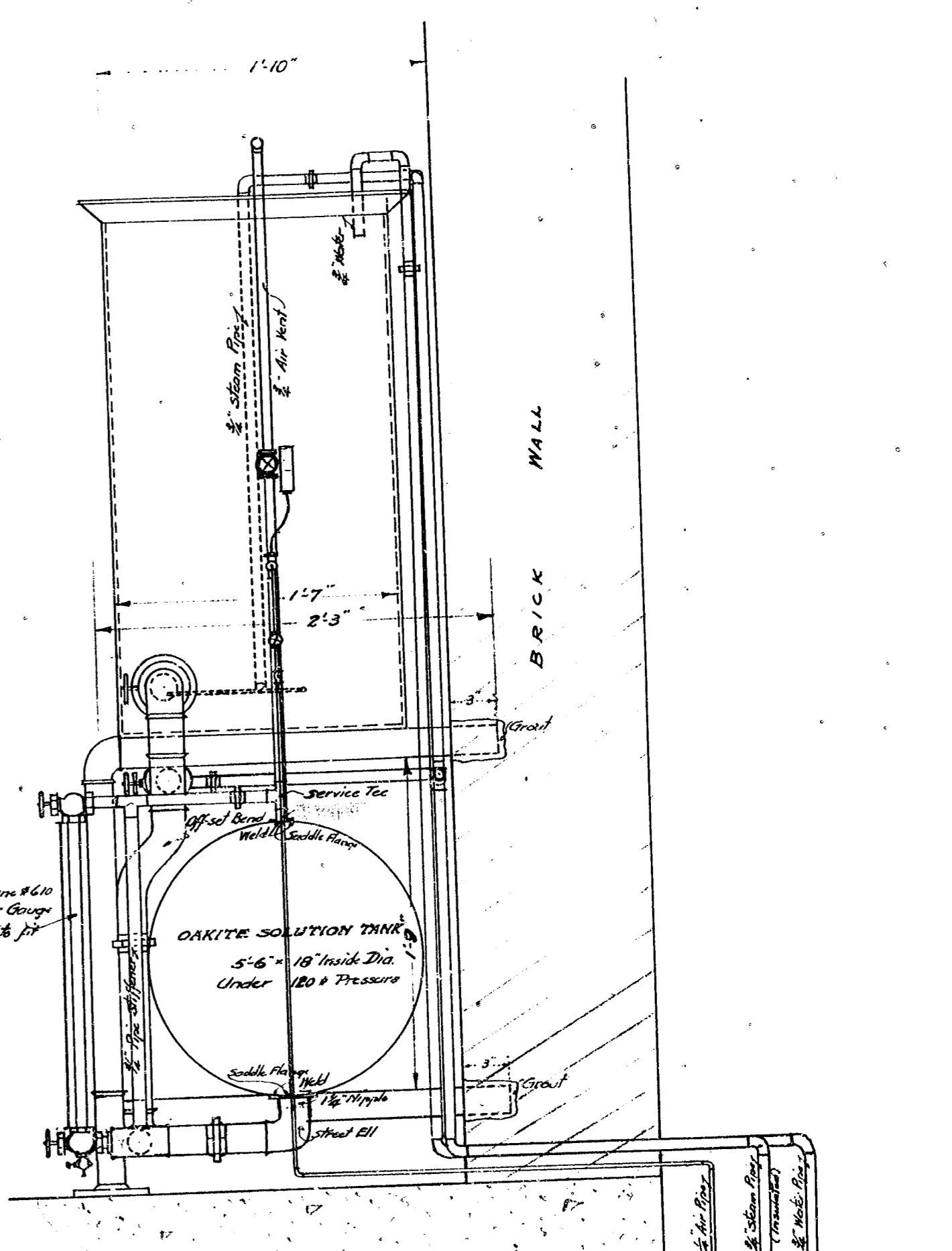
JET HOLDER

BILL OF MATERIAL

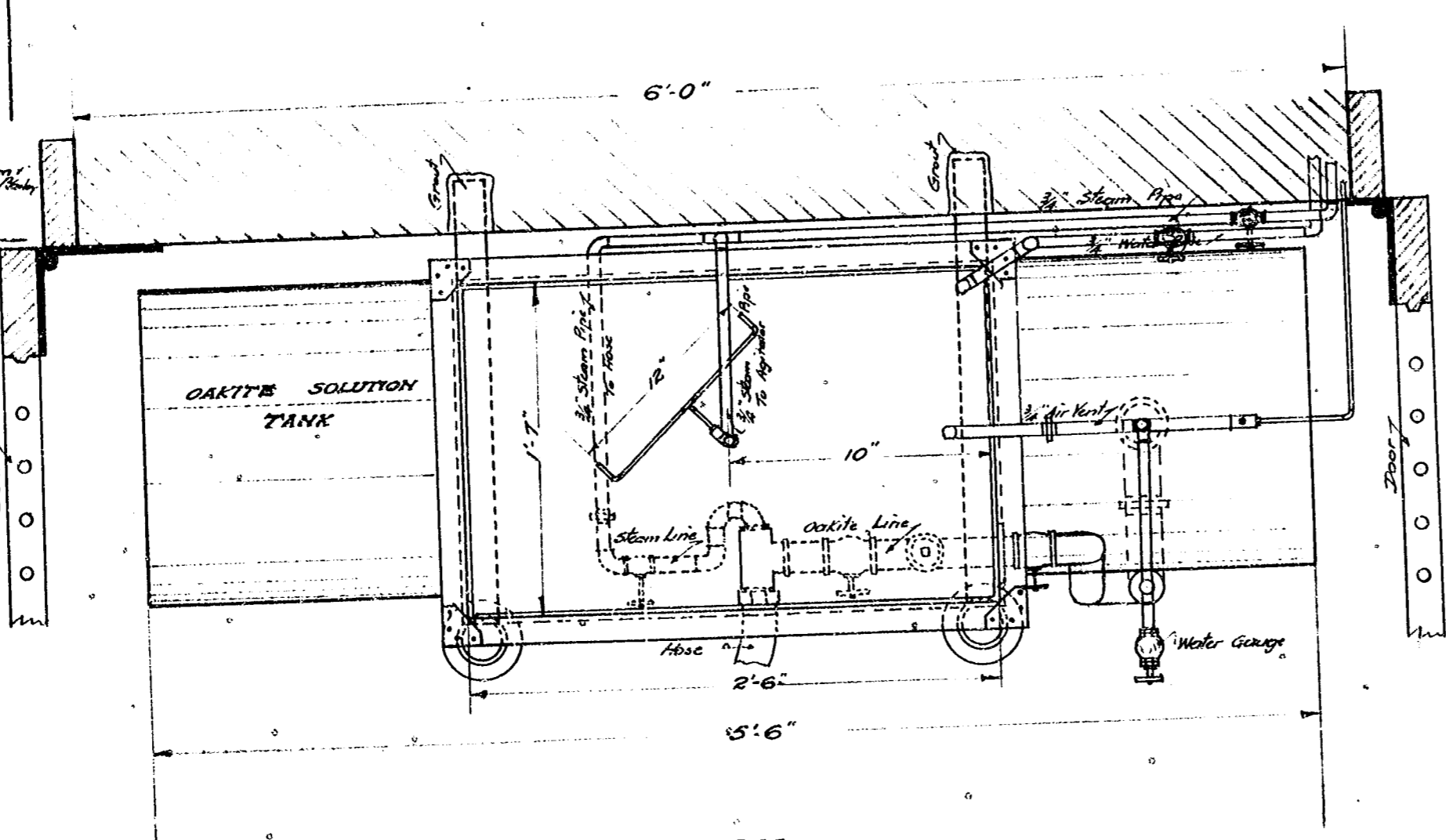
- 1 - Gal. Iron Tank 3'-0" x 2'-6" x 1'-7" (Inside Dim.)
- 1 - Gal. Iron Circular Tank 5'-6" x 18" Dia. () Under 120# Pressure
- ~ Pipe Supports ~
- 2 - 1 1/2" Std. Ser. Ells
- 2 - 1 1/2" Tees
- 2 - 1 1/2" x 2" Nipples
- 2 - 1 1/2" x 6" Common Flanges
- 14'-0" 1 1/2" Std. Pipe
- ~ Gravity Line from Tank ~
- 1 - 1 1/2" E.H. Tee, with 1/2" opening on side
- 2 - 1 1/2" Ells
- 3 - 1 1/2" Ells
- 1 - 1 1/2" Off-set Bend
- 2 - 1 1/2" x 3" Nipples
- 2 - 1 1/2" x 2"
- 4 - 1 1/2" x 1"
- 2 - 1 1/2" Crane Globe Valves
- 4 - 1 1/2" Navy Unions
- 1 - Muller Strainer
- 2 - 1/2" x 1/2" Reducing Plugs
- 3'-0" 1 1/2" Std. Pipe
- 1 - Hose Connection
- ~ Steam Line ~
- 4 - 3/4" E.H. Tees
- 10 - 3/4" Ells
- 2 - 3/4" Crane Check Valves
- 2 - 3/4" Globe
- 3 - 3/4" Navy Unions
- 20'-0" 3/4" Steam Pipe
- 1 - 3/4" Steam Gauge
- 1 - 3/4" Siphon Pipe
- 4 - 3/4" E.H. Tees
- 4 - 3/4" Ells
- 3 - 3/4" x 1 1/2" Nipples
- 2 - 3/4" x 1/2"
- 2 - 3/4" Red. Plugs
- 7 - 3/4" 1/2"
- ~ Water Line ~
- 2 - 3/4" Std. Tees
- 6 - 3/4" Ells
- 2 - 3/4" Navy Unions
- 1 - 3/4" Crane Globe Valve
- 1 - 3/4" Crane A-10 Water Gauge, Gas to fit
- 14'-0" 3/4" Std. Pipe
- ~ Air Line ~
- 3 - 3/4" E.H. Tees
- 4 - 3/4" Navy Unions
- 1 - 3/4" Crane Globe Valve
- 8'-0" 3/4" M.I. Pipe
- 2 - 3/4" x 1/2" Red. Plugs
- 4 - 3/4" E.H. Ells
- 2 - 3/4" Navy Unions
- 2 - 3/4" Crane Globe Valve
- 2 - 3/4" Check
- 1 - 3/4" Crane Pressure Gauge, Reading to 120#
- 4 - 3/4" x 1" Nipples
- 4 - 3/4" x 1/2"
- 8'-0" 3/4" M.I. Pipe
- ~ Jet Holder ~
- 1 - 1" Crane # 906 Hose Nozzle with fittings
- 70'-8" 1" Steam Hose 100# Pressure, Gas supplied by Main
- 7'-0" 3/4" Steam Pipe
- 4 - 3/4" x Rods 2'-9" long
- 4 - Plates drilled as shown.
- ~ Oakite Solution ~
- 1 - Shovel full or less per tank of water



FRONT VIEW



END VIEW



PLAN

CITY OF LOS ANGELES
SECTION NO. 3
NORTH OUTFALL SEWER
HYPERION SEWAGE TREATMENT PLANT
STEAM APPARATUS FOR REMOVING GREASE
FOR
NORTH SCREENING PLANT

SCALE 1/2" = 1'

JOHN C. SHAW
CITY ENGINEER

APPROVED

CITY ENGINEER

29986

Designed by J. J. Barclay
Drawn by E. J. Barclay
Checked by J. J. Barclay
Approved by J. J. Barclay