

Maps 16, 26-27

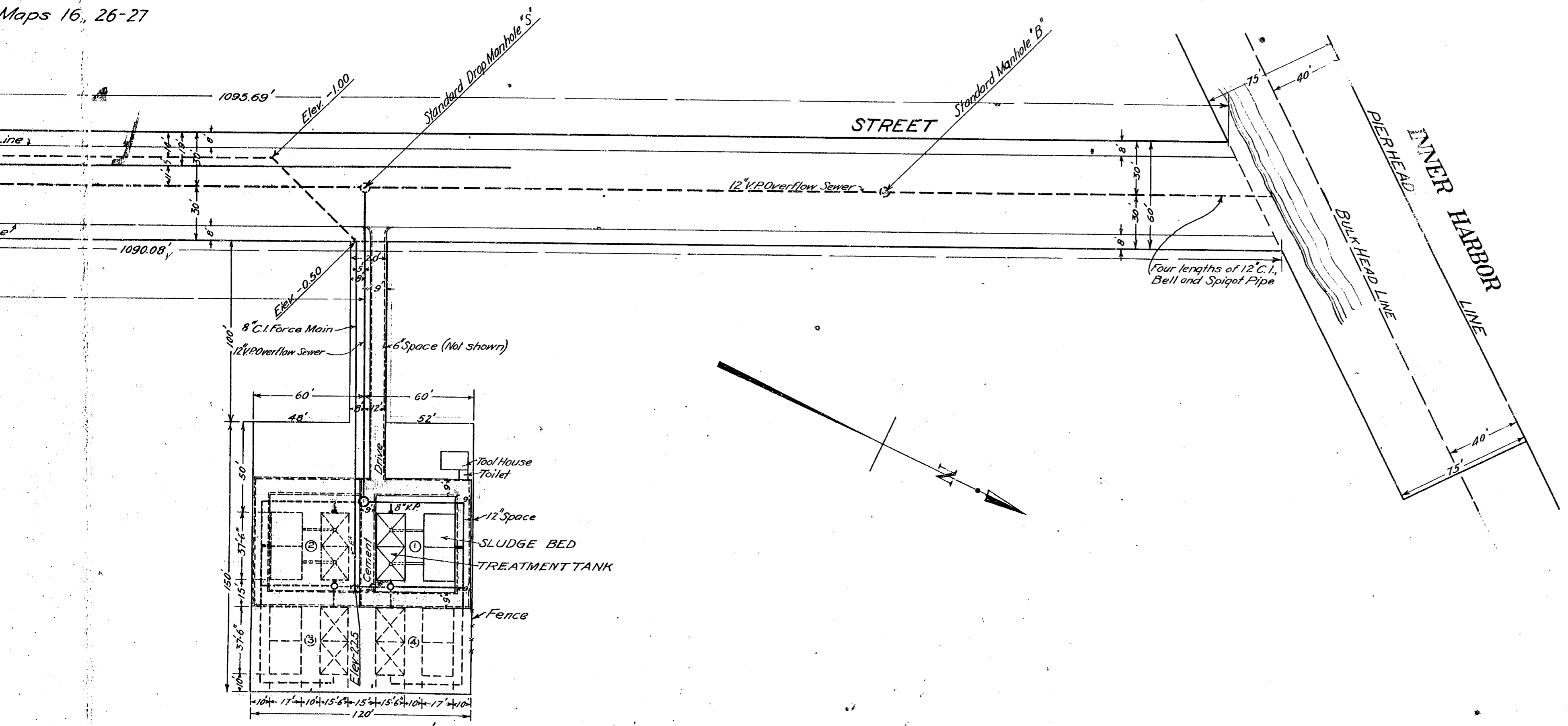
CITY OF LOS ANGELES
EAST SAN PEDRO SEWAGE DISPOSAL
MORMON STREET TREATMENT PLANT
LOCATION PLAN

A.C. HANSEN CITY ENGINEER
 Scale 1" = 40'
 Approved *X* 1918
 City Engineer.

- NOTES
1. Numbers enclosed in circles represent plant units consisting of an imhoff tank and a sludge bed.
 2. Location of plant units to be built immediately, shown by full lines.
 3. Location of plant units to be built in the future shown by broken lines.
 4. That portion of force main and overflow sewer shown by broken lines to be built under another contract.
 5. Sewer Survey F.B. 6214-41
 6. Office number G.E. 38453
 7. Red tint indicates boundaries of plant site.
 8. For details of treatment plant units see plans number
 9. For location and details of Morris Place pumping plant, see plan No 28022.

NOT CONSTRUCTED

Designed By *M.C. Steele - 5-30-18*
 Drawn by *Richmond*
 Checked by *Steele - 5-24-18*
 Approved by *X*



28021

00021

For continuation of Ocean Avenue, see Plan No 28,022.

Maps 16, 26-27

Lot 5

MORMON

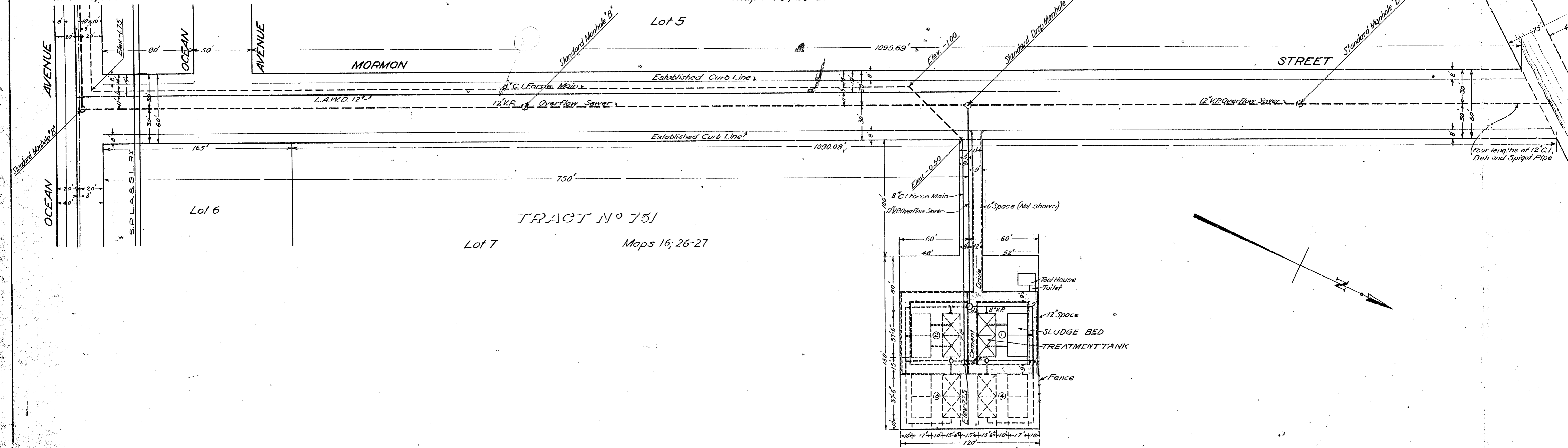
STREET

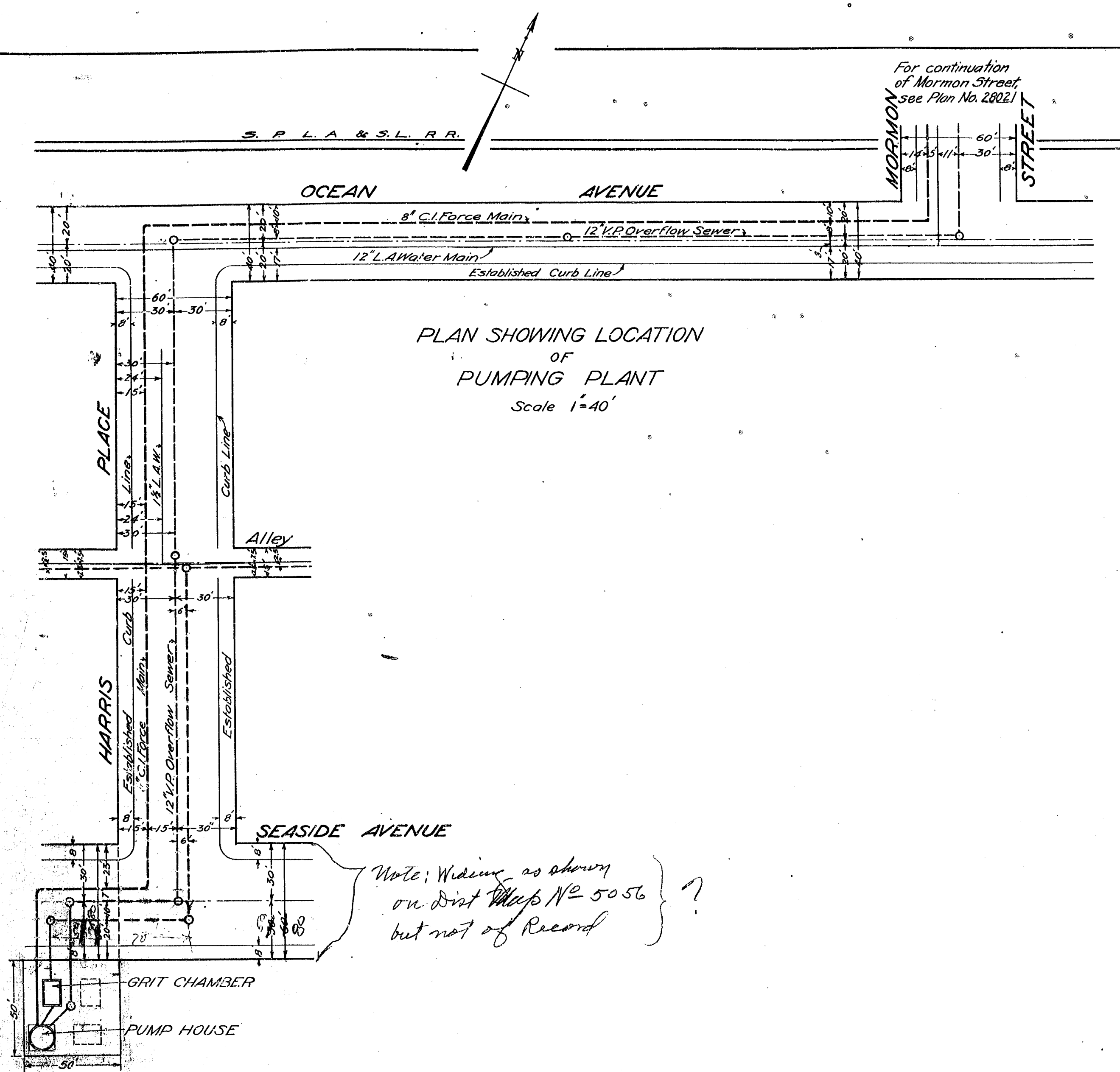
Lot 6

TRACT No 751

Lot 7

Maps 16; 26-27





For continuation
of Mormon Street
see Plan No. 28021

CITY OF LOS ANGELES
EAST SAN PEDRO SEWAGE DISPOSAL
HARRIS PLACE PUMPING PLANT
PLAN SHOWING LOCATION AND DETAILS

A.C. HANSEN CITY ENGINEER

Scales as shown

Approved.....1918

.....City Engineer

NOTES

1. Office number, G.E. 38453.
2. Field book number 6214-41, for cross-sections.
3. For location of Mormon Street treatment plant, see plan No 28,021.
4. For details of "
5. Work not to be performed under this contract shown by broken lines.
6. Work to be performed under this contract subject to Specifications No.
7. Elevations shown hereon are referred to city datum and are in feet and hundredths of a foot.
8. Red tint indicates boundary of Pumping Plant
9. Approval of area shown hereon for Pumping Plant sent to Board of Harbor Commissioners..... and approved.

DESIGNED BY: W.C. Stalk... 5-10-18
DRAWN BY: Richmond
CHECKED BY: Stalk... 2-1-19
APPROVED BY:

*Dist Map
5056*