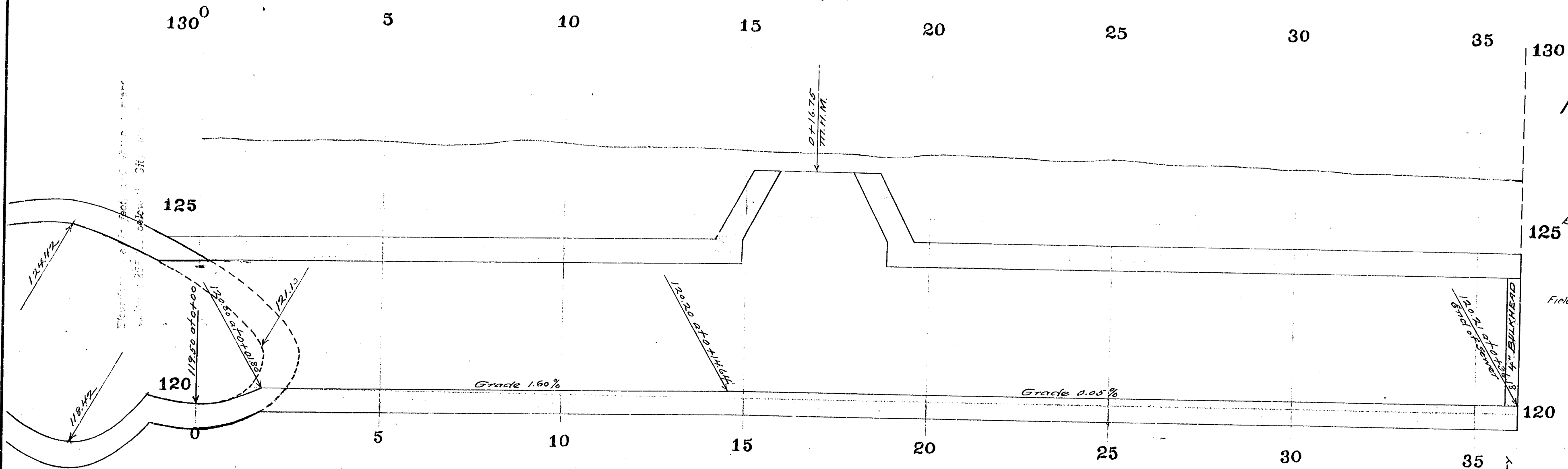


COPY FILED

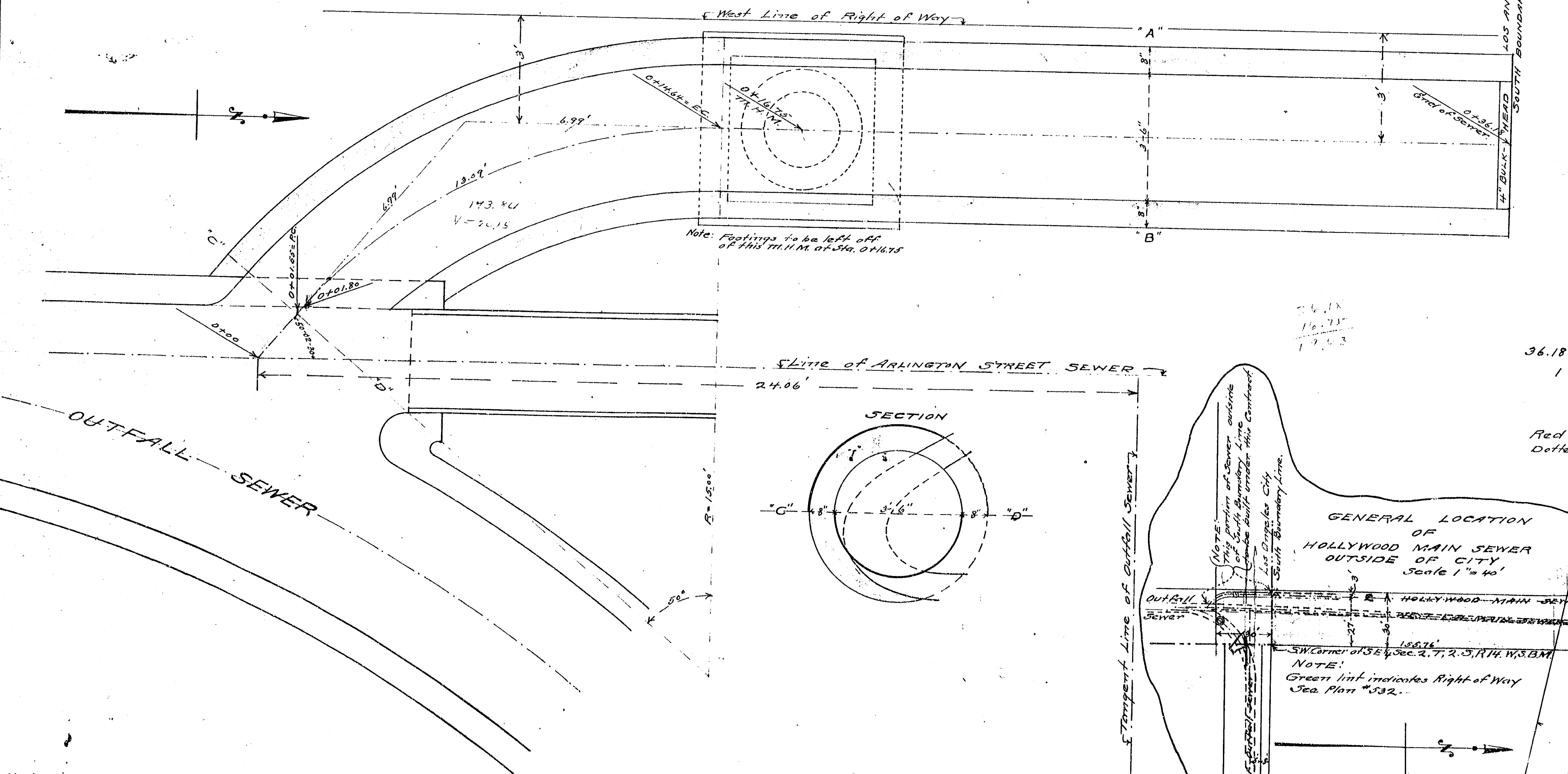
PROFILE

Scale 1/2" = 1'



PLAN

Scale 1/2" = 1'



CITY OF LOS ANGELES HOLLYWOOD MAIN SEWER

PLAN & PROFILE

OF PORTION OF SEWER NOT INSIDE CITY
BETWEEN OUTFALL SEWER AND CITY BOUNDARY LINE

HOMER HAMLIN City Engineer

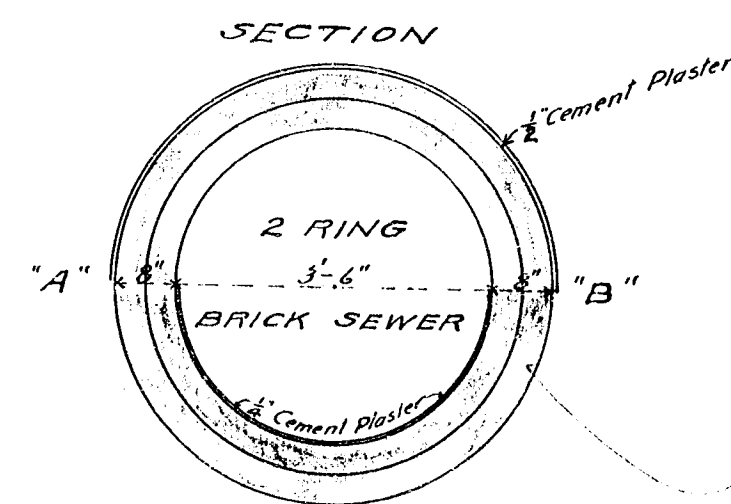
MARCH 1911

Field Book 3230-1

Approved March 18th 1911

Homer Hamlin
City Engineer

Drawn by Odorris
Checked by Bally 3-16-11



SUMMARY

36.18 LINEAL FEET OF 3'-6" BRICK SEWER
1 MANHOLE "M" See Plan 71225753 for details.

NOTES

Red tint indicates section of new brick work to be built.
Dotted lines indicate old brick work to be removed.

GENERAL LOCATION OF HOLLYWOOD MAIN SEWER OUTSIDE OF CITY

Scale 1" = 40'

